

Eclipse-based IDE with Debugger and Compiler Tools for MIPS Processors

Key Applications

Navigator™ USB and
10/100 Ethernet Probe
Navigator™ iFlowtrace™ Probe
Navigator™ Pro Probe

Supported MIPS cores:

M4K™, M14K™, 4K™, 4KE™, 24K™,
24KE™, 34K™, 74K™, 1004K™ and
1074K™ families

Host requirements

X86 PC with minimum 1 GB (Gbyte)
of memory

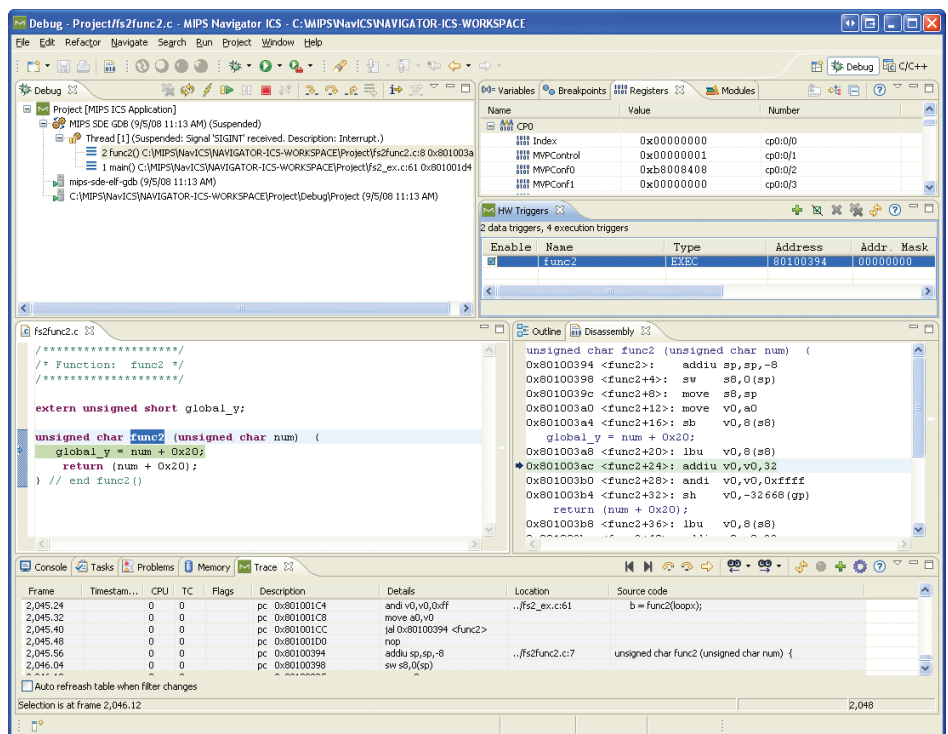
Operating Systems

Windows® XP (32-bit)
Windows 7 (32-bit and 64-bit)
RHEL/CentOS 5.5 (32 bit and 64 bit)

MIPS® Navigator™ ICS for MIPS Processor Cores

The MIPS Navigator ICS (Integrated Component Suite) supports all MIPS32® processor cores and is fully integrated with the Mentor Graphics® Sourcery CodeBench C/C++ toolchain for MIPS, providing a complete development environment and a rich set of software utilities that are easy to install and use.

The Eclipse environment has rapidly become the embedded industry standard for integrated development environments (IDEs), with software tools and plug-ins from many vendors integrating sophisticated editing, compiling, debugging, and program management tools. MIPS Technologies has leveraged this power and extensibility as a control environment and user interface for developing and debugging MIPS-Based™ embedded systems.



Automated Installation Process

Embedded software developers increasingly expect easy to use, out-of-the-box solutions. MIPS Navigator ICS completely automates the installation process for the development environment, including the Eclipse-based IDE, the toolchains, probe software and the MIPSsim™ Instruction Set Simulators. Once installed, it provides sample projects to get the developer started rapidly on new MIPS-Based embedded development projects.

Support for System-level Debug Solutions

For low-level debug, the environment uses the EJTAG-based MIPS probe that provides the physical link between the host PC and the target system with a MIPS-Based core. The probe enables access to all of the debug features available in MIPS cores, including EJTAG processor control, PDtrace™, and zero-overhead PC sampling. The MIPS Navigator ICS organizes and presents the information to the user in a more logical way for faster debugging of the hardware and software.

MIPS Navigator ICS is Extensible

Navigator ICS plug-ins make it faster and easier to get the most out of the extensive trace and triggering features in MIPS cores. The plug-ins also facilitate browsing and working with symbols, and profiling start-up through Linux kernel code using the Hot Spot Analyzer features. All this and a growing base of software utilities, including source code editors, browsers, syntax checkers, and program management tools make for a powerful embedded development and debugging environment.

Features

- Includes industry-standard Eclipse-based CDT and plug-ins, with powerful integrated source code editor and browsers with auto complete, syntax highlighting, and many more advanced editing features
- Includes the Mentor Graphics Sourcery CodeBench C/C++ GNU-based toolchain for both bare-iron targets and GNU/Linux targets
- Easily integrates large existing software projects utilizing makefiles.
- Provides a complete control center for debugging with MIPS Navigator™ probes
- All on-chip and off-chip probe trace features are integrated with the IDE
- Supports multi-core debug with multiple MIPS cores on the EJTAG chain
- Includes MIPSsim and IASim CPU Instruction Set Simulators for debugging code when a target is not available
- Supports all MIPS32 cores, including the M4K™, M14K™, 4K™, 4KE™, 24K™, 24KE™, 34K™, 74K™, 1004K™ and 1074K™ families
- Includes plug-in for Hot Spot Analysis (HSA) that graphically displays code execution results using the zero-overhead PC sampling capability of certain MIPS cores and the Navigator probes
- Node locked PC or floating licenses available
- Runs on Windows or PC Linux
- Software integrated into a single, easy-to-use installation
- Expression-based pattern creator for the Trigger View
- Symbolizer symbol browsing dialog to provide easy lookup of addresses from symbol names

Eclipse-based IDE with Debugger and Compiler Tools for MIPS Processors

Worldwide Offices

Headquarters
MIPS Technologies, Inc.
955 East Arques Avenue
Sunnyvale, CA 94085
United States
Phone: 408 530-5000
Fax: 408 530-5150
www.mips.com
info@mips.com

MIPS Technologies, Inc. (Oregon)
Beaverton, Oregon
Phone: 503 597-5091
Fax: 503 924-1110

MIPS Technologies (Shanghai) Co., Ltd.
Shanghai, China
Phone: +86 21 6385 8383
Fax: +86 21 5306 0833

MIPS Technologies B.V.
Jhubei, Taiwan
Phone: +886 3 6583 561
Fax: +886 3 6583 563

MIPS Technologies B.V.
Tokyo, Japan
Phone: +81 3 5733 9541
Fax: +81 3 5733 9545

MIPS Technologies B.V.
Remscheid, Germany
Phone: +49 170 6365 370
Fax: +49 2353 666 920

MIPS Technologies B.V.
Nesher 36841, Israel
Derech Bar Yehuda 53 - POB 12034
Phone: +972 (545) 441 579
Fax: +972 (153) 545 441579



©MIPS Technologies, Inc. 2009. All rights reserved.
MIPS, MIPS32, microMIPS, M4K, M14K, 4K, 4KE, 24K, 24KE, 34K, 74K, 1004K, 1074K, Navigator Probe, Navigator Pro Probe, Navigator Console Software, Navigator ICS, Navigator iFlowtrace Probe, MIPS PDtrace, and MIPS-Verified are trademarks or registered trademarks of MIPS Technologies, Inc. in the United States and other countries. All other trademarks referred to herein are the property of their respective owners.
Printed in the USA. Rev 1011