

The System Navigator™ probe is designed to support the special features and integrated peripherals of the NXP LPC952 and related processors with JTAG interface. The built-in On-Chip Instrumentation (OCI®) extensions provide a powerful debug tool with advanced features at a competitive price.

The probe connects to the target system using a standard 10-pin debug connector. It requires access to either 2 or 4 pins in the core processor. The system runs on a Windows® 7 or Windows® XP PC over a USB 2.0 or optional 10/100 Ethernet port. A graphical, source level debugger program provides an intuitive, easy to use interface.

Software Breakpoints

An unlimited number of software breakpoints can be set anywhere in the writable address space of the processor. The software breakpoints use a dedicated instruction. This approach leaves the normal breakpoint vector available to any native debugger that might exist on the target system.

Hardware Event Recognizers

The processor OCI extensions include a scalable number (up to 8 triggers) to control breakpoints and trace collection. The most basic use of recognizers is for hardware execution breakpoints. Unlike software breakpoints, hardware execution breakpoints can be set in non-writable ROM or flash memory. Like their software counterparts, they stop program execution just prior to an instruction being executed.

Features Overview

- Supports NXP (Philips) LPC952 processors and variants
- Utilizes On-Chip Instrumentation (OCI®) debug extensions in the processor
- Supports bank memory switching
- Read-write all processor registers, internal/external SFRs, program memory and data memory
- Go, halt processor run control
- Single step by assembly or C source instruction
- Unlimited software breakpoints
- Load binary, Intel Hex or OMF51 file formats
- Hardware execution breakpoints
- Complex triggers monitor address and data for code memory, data memory and SFRs
- Driver software included for use with Keil µVision (UV3 or UV4) debugger interface
- Measure time in nanoseconds between two triggers
- Low-level access to JTAG functions for silicon verification
- Single line assembler and disassembler
- Trace window with full trace decode into instruction mnemonics
- Symbolic debug
- Load symbols, including code, variables, and variable types
- Support C and assembly source code
- Source window can display C source or mixed mode
- Source window provides execution control: go; halt; goto cursor; step over/into call
- Source window can set or clear software or hardware breakpoints
- Trigger window for setting complex triggers



Complex Trigger Features

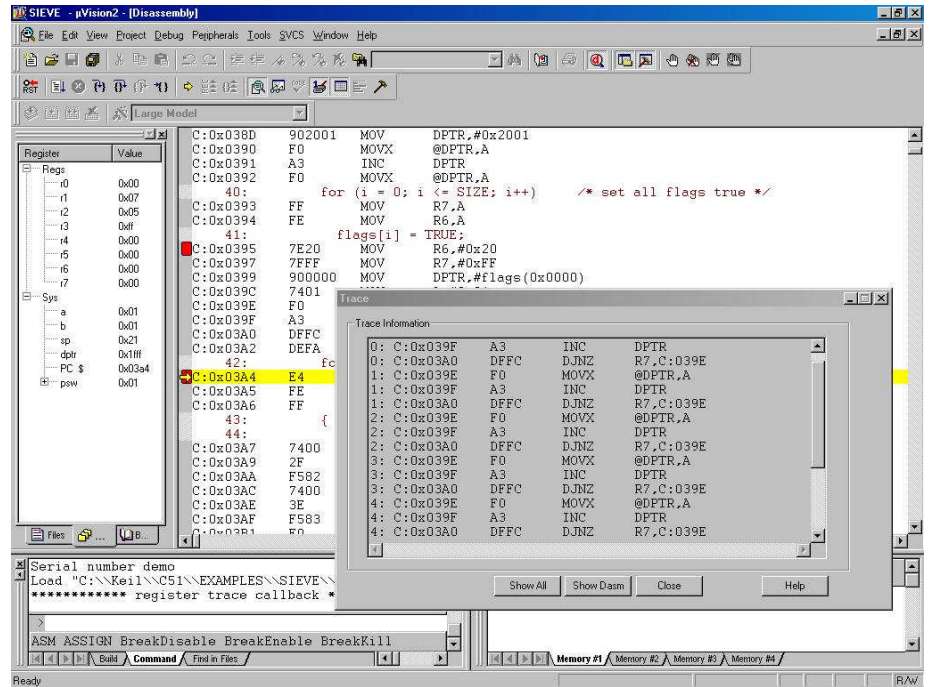
For more sophisticated debugging, the event recognizers can monitor bus activity to program memory, data memory and the Special Function Registers (SFRs). When the event recognizers are used in this fashion, they can control breakpoints and trace collection. Breakpoints and trace collection are commonly referred to as event actions. Event recognizers can be combined to produce 2 “paired events” to include a range for the address and masking bits for data.

Real Time Trace

The System Navigator supports branch trace message (BTM) collection. This allows the System Navigator to track changes in program flow. The trace display contains disassembled executed instructions. For faster hardware and software integration, the traced instructions can also be viewed with interleaved C source code. Trace depth is set by the processor configuration from 0 to 128 BTM frames, but effective trace depth can be larger depending on the number of branches taken or not taken in the program.

Source Level Debug

An interface is included for C source-level debug with the System Navigator tool. The Windows interface is tightly integrated to the trigger and trace facilities. It includes a C-like macro language supporting automation of routine tasks or regression tests. The macros allow the user to test the “state” of any CPU parameter and initiate an action as well as supporting the passing of parameters. In addition to the source level debug interface a driver is included for using the System Navigator with the Keil μ Vision (UV3 or UV4) debugger.



Host Requirements

PC with minimum 32 Mbytes of memory, USB 2.0 or 10/100 Ethernet, and Windows® 7 (32-bit or 64-bit) or Windows® XP (32-bit) operating system are required.

Product Codes

SNAV-P8051-USB	System Navigator, USB 2.0 interface
SNAV-P8051-ETH	As above with both USB 2.0 and 10/100 Ethernet interface



MIPS Technologies Inc.
955 East Arques Ave.
Sunnyvale, CA 94085
USA

Ph: 503-597-5091 x6103
Fax: 503-924-1110
<http://www.mips.com>
tools@mips.com